

# 2004 Ford E Series Van

6.0 LITER POWERSTROKE DIESEL

Adds Penntex PX5T Alternator

**A1-0047**

## PARTS LIST

1	6m-1.0 x 15 Bolt	6	10m Lock Washer
1	6m Flat Washer	3	1" x 6" Wire Loom
1	6m Lock Washer	3	6" Black Zip Tie
2	10m-1.5 x 35 Bolt JIS Head	1	7/8" x 15/32" x 1-13/32" Idler Spacer
1	10m-1.5 x 40 Bolt	1	7/8" x 15/32" x 1-1/8" Idler Spacer
1	10m-1.5 x 80 Bolt	1	1325K-8 Dayco Belt
2	10m-1.25 x 100 Bolt	1	A1-0047-1 Main Mount
1	10m-1.25 x 135 Bolt	1	A1-0047-2 Secondary Mount
3	10m Flat Washer	1	A1-0047-3 Turbo Bracket

All photographs in this installation guide are representative to show installation location only. The physical appearance of your vehicle may vary. Brackets in kit may vary in physical appearance from those in photographs.

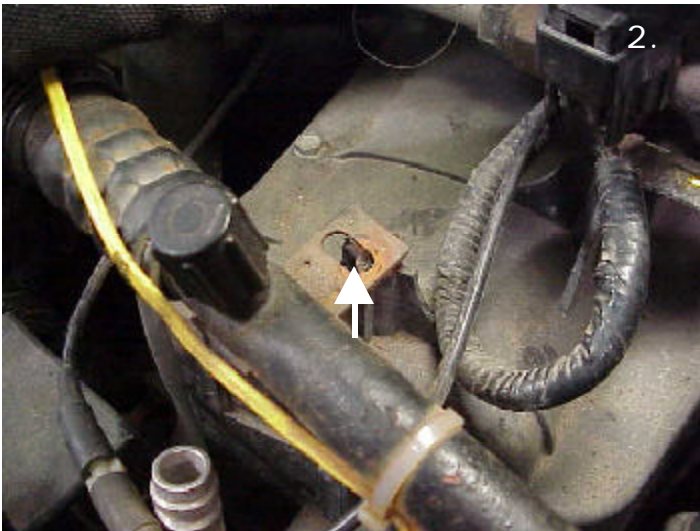
# 2004 Ford E Series Van

6.0 LITER POWERSTROKE DIESEL

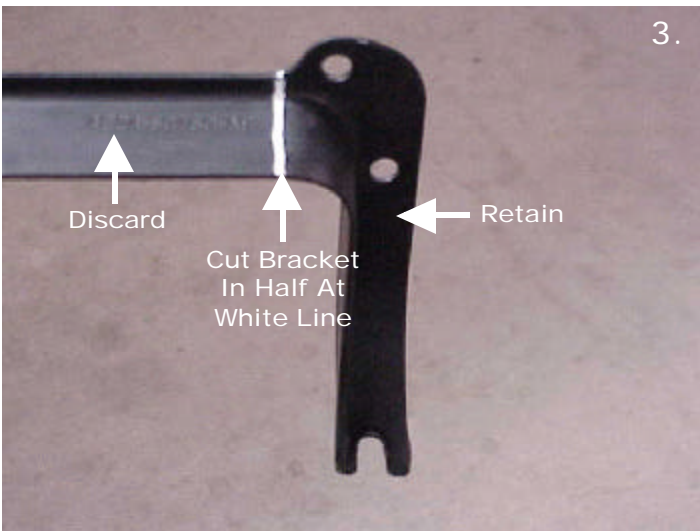
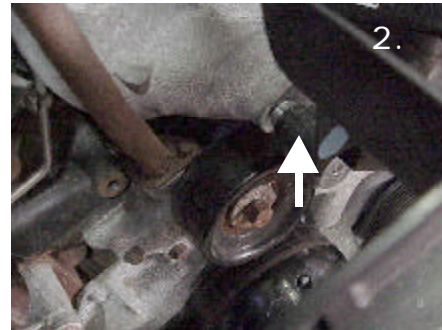
Adds Penntex PX5T Alternator

A1-0047

## INSTALLATION INSTRUCTIONS



1. Disconnect battery.
2. Remove and retain screw so that A/C line can be held aside. Remove and retain stator bolts so that stator can be moved slightly to the side.



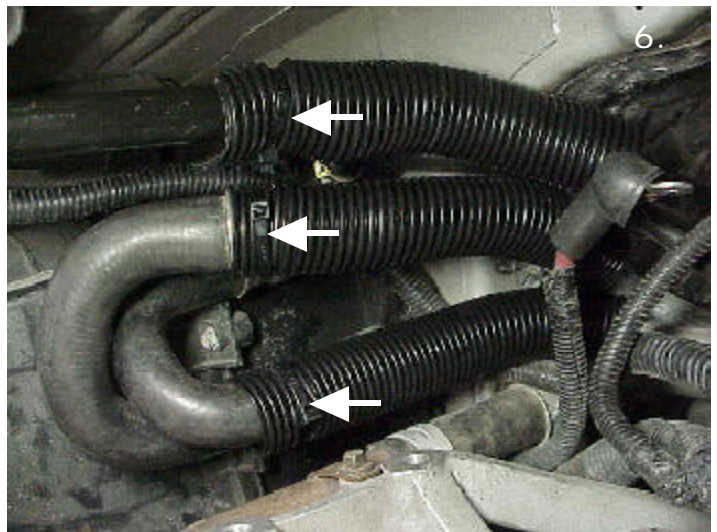
3. Mark position of OE tensioner. Remove and discard OE belt, alternator and hardware. Remove and retain turbo tube, bracket and hardware. Cut turbo bracket as shown in photo.
4. Bend bracket on transmission tube as shown in photo.



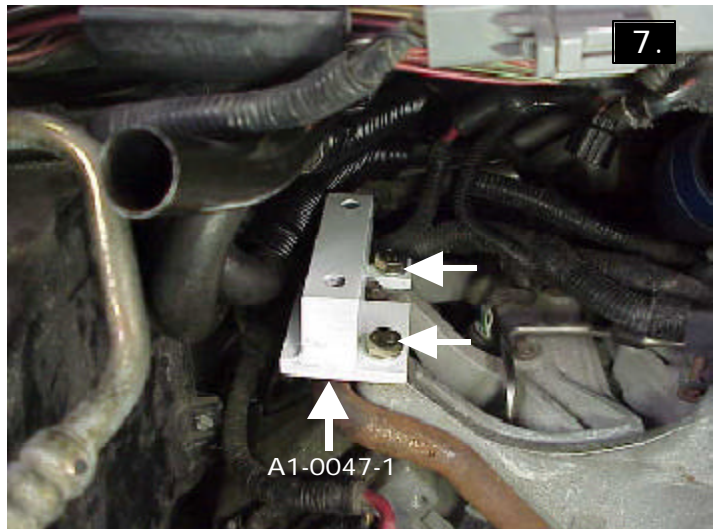
5. It may be necessary to trim plastic wire harness holder to achieve proper fan clearance.

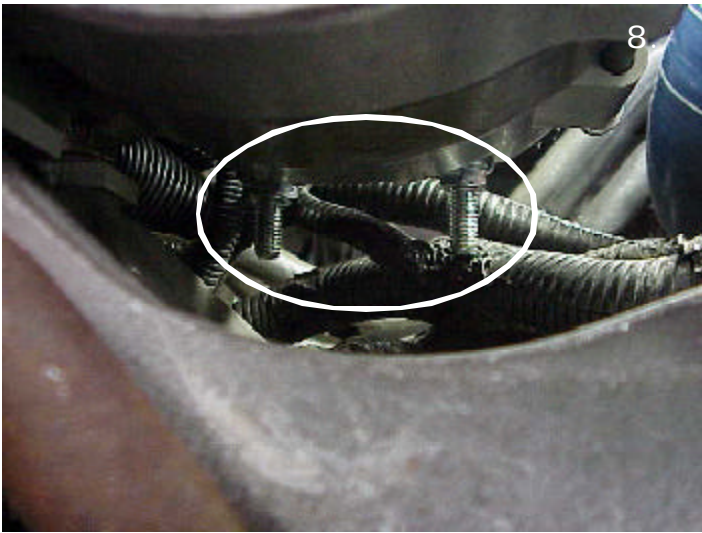


6. Install three (3) 1" x 6" wire loom on both heater hoses and transmission tube. Secure wire looms with three (3) 6" black zip tie (one per wire loom).



7. Install A1-0047-1 main mount using two (2) 10m-1.5 x 35 JIS W/LW .





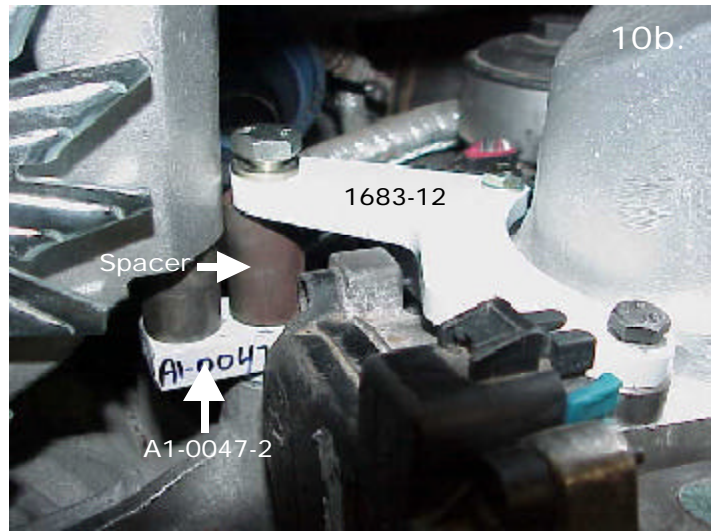
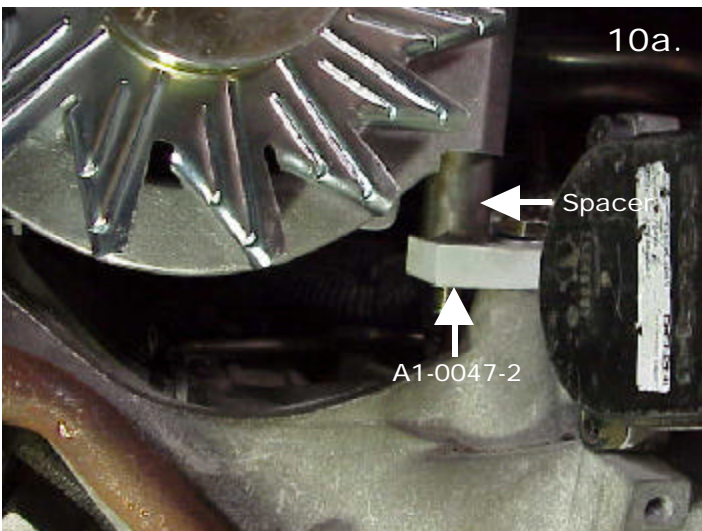
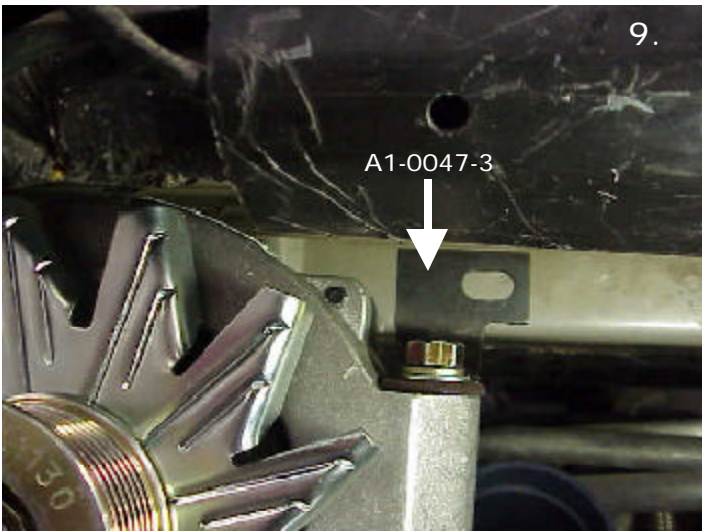
8. Rotate alternator case so that electrical posts are positioned in a downward location.

9. Insert alternator into location and rotate so bolts can be installed. Install two (2) 10m-1.25 x 100 W/FW-LW in outboard bosses. Install A1-0047-3 turbo bracket to inboard boss using one (1) 10m-1.25 x 135 W/FW-LW. Start the two (2) 10m x 100 bolts.

**If installing alternator kit only, use step #10a. If installing alternator kit with 1683 compressor kit, use step #10b.**

10a. Loosely install A1-0047-2 secondary mount using one (1) 10m-1.5 x 40 W/LW at engine boss. Use one (1) 7/8" x 15/32" x 1-1/8" idler spacer between alternator and secondary mount onto 135m bolt.

10b. Loosely install A1-0047-2 secondary mount using one (1) 7/8" x 15/32" x 1-1/8" idler spacer between alternator and secondary mount onto 135m bolt. Connect 1683-12 casting brace to secondary mount and engine using one (1) 10m-1.5 x 80W/LW and one (1) 7/8" x 15/32" x 1-13/32" idler spacer.



11. Reattach turbo tube using one (1) 6m-1.0 x 15 W/FW-LW.
12. Reinstall modified OE turbo bracket using OE hardware. Tighten turbo bracket first, then all remaining bolts.



13. Install 1325K-8 Dayco belt. Check mark on OE tensioner to ensure tensioner is back in range.
14. Reinstall turbo boots, stator bolts and A/C line bolt.
15. Check all clearances at all pinch points and other areas such as belts, hoses, wire harnesses, fan and shroud, compressor clutch, etc. before starting engine.
16. Connect batteries.

