

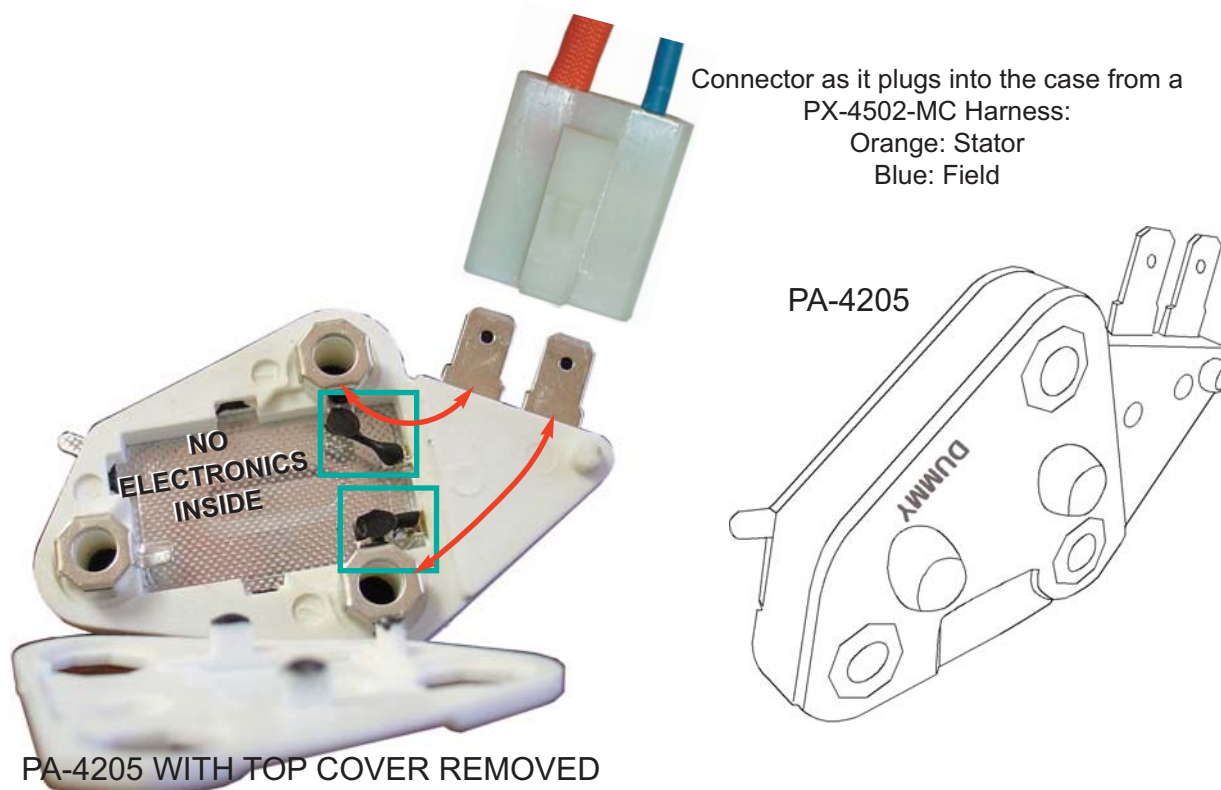


## Tech Info: Dummy “Regulators” Inside Some PX-4 Models

### WHEN A REGULATOR REALLY ISN’T A REGULATOR AT ALL

This part may look like a standard internal voltage regulator used in millions of GM cars but that’s not what it is. It’s empty inside except for internal links indicated by the arrows. Used in some PX-4-JM,PM,P, P2, and V-series 12 & 24-volt alternators, part number PA-4205 is a regulator in appearance only. Some have “DUMMY” stamped on them. All PennTex Charging Systems including these have a separate *external* voltage regulator.

The PA-4205 serves as connection point for the 2-wire alternator plug and is only a pass-through for the Field and Stator wire connections between the alternator and a PennTex Charging System harness. There are no electronics in it and it doesn’t regulate current in any way. If one of the two connections inside goes open, it must be replaced with another “dummy” regulator for the charging system to operate properly. The outside cover can be easily removed for inspection, as shown. A generic internally regulated regulator can not be substituted.



## PERFORMANCE, ENDURANCE AND SATISFACTION

**PennTex**  
 INDUSTRIES, INC.

Manufacturers of  
 High Efficiency Alternators and  
 Mobile Electronic Devices.

Corporate:  
 202 Plaza Drive  
 Manchester, PA 17345  
 Ph: 717-266-8762  
 Fax: 717-266-7803

Manufacturing/Sales/Tech/Warranty:  
 7620 Flagstone Drive  
 Fort Worth, TX 76118  
 Ph: 817-590-2818, Toll Free: 877-590-7366  
 Fax: 817-590-0505, Tech Fax: 817-590-0398

www.penntexusa.com  
 email: sales@penntexusa.com  
 tech@penntexusa.com

# PA-4205 "DUMMY" REGULATOR

This part is used in some PX-4 PennTex alternators. It may look like an internal voltage regulator but that is not what it is.

No PennTex alternators use an internal voltage regulator. The purpose of this part is to provide a connection point for the two-wire Stator/Field connector, and to pass that connection through to the Brush Assembly and the Positive Heat Sink. The drawing in the center illustrates what is inside. Dotted lines show what connects to what.

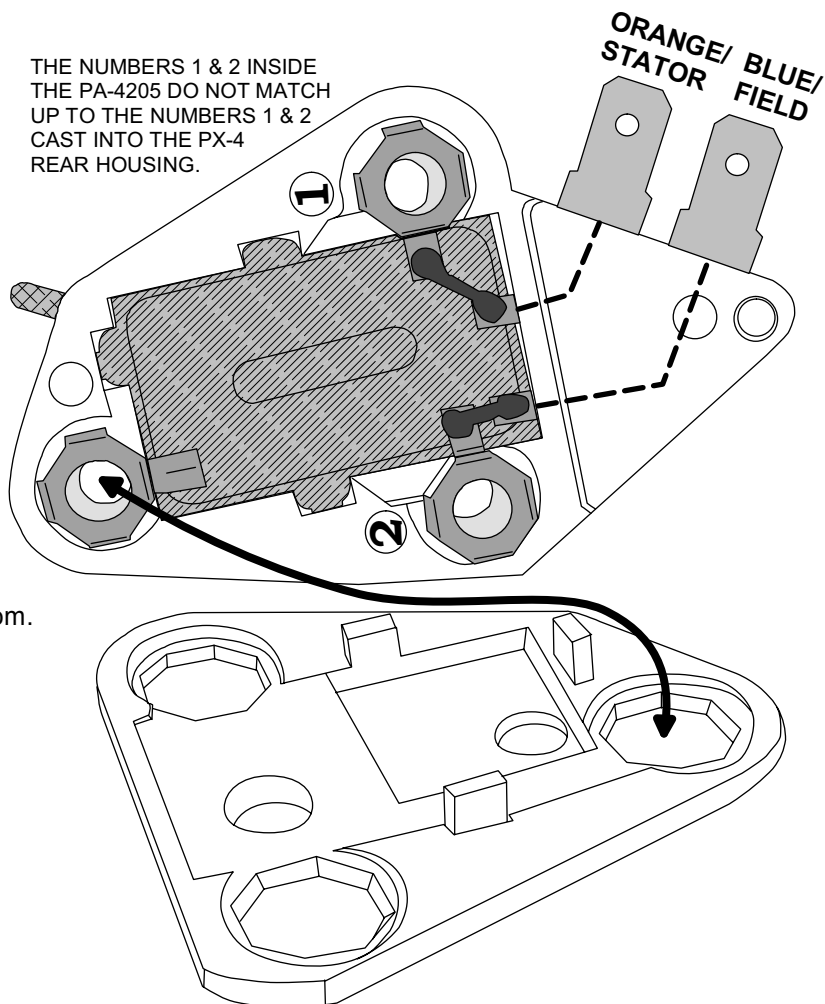
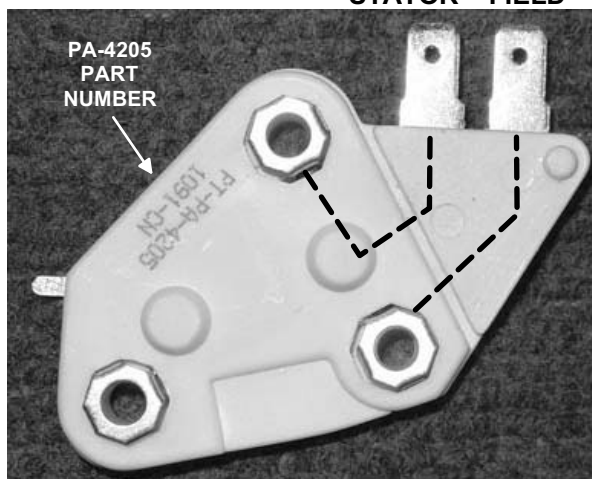
The box in the center of the PA-4205 drawing is the inside of the bottom cover. The only actual connections inside are the two links that look like dog bones.

After removing the cover, inspect the links and the tabs that the links are connected to for continuity. Older design parts have failed in this area.

Note that the PA-4205 has that part number stamped in ink on the outside of the part. Some very early examples of this part may have only the word "DUMMY" stamped on it.

Do not attempt to substitute a part that looks like a PA-4205 that has a voltage regulator inside of it. This will cause all sorts of problems with the PennTex charging system. A replacement PA-4205 can be purchased from any our Distributors listed on our web site at [www.penntexusa.com](http://www.penntexusa.com).

ORANGE/ BLUE/  
STATOR FIELD



- Alternators that use a PA-4205:
- PX-4JM 12-Volt
  - PX-4JM-120 24-Volt
  - PX-4P 12-Volt
  - PX-4P2 12-Volt
  - PX-4P2-120 24-Volt
  - PX-4PM 12-Volt
  - PX-4SMD-120 24-Volt
  - PX-4V-120 24-Volt
  - PX-4V-210 12-Volt

SMALL PARTS ARE ENLARGED FOR VISIBILITY

**PennTex**  
INDUSTRIES, INC.

DATE: 03-04-2013

DRAWING BY DMc  
REVISED BY

Scale: None  
DATE:

**PA-4205 USED IN  
SOME PX-4 MODELS**