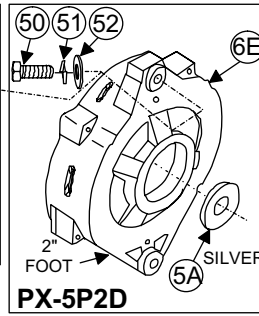
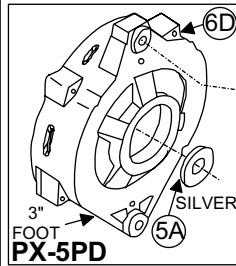
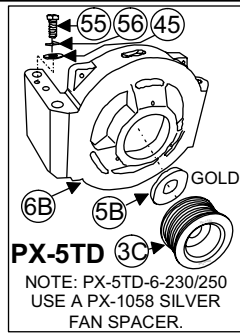
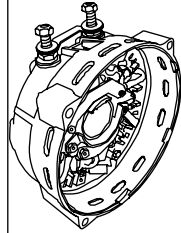


FOR INFORMATION ON DISASSEMBLY SEE OUR WEB SITE:
www.penntexusa.com

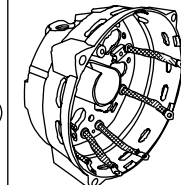


TWO POSITIVE POSTS



PX-5 REAR HOUSING ASSEMBLY WITHOUT STATOR, REAR BEARING, WAVE WASHER, SNAP RING, OR 3 STATOR ATTACHING NUTS

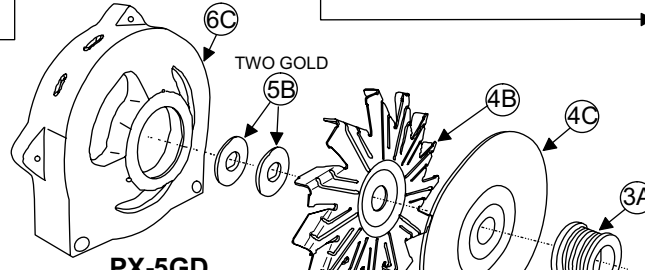
- 48A PX-5RD: PX-5650
- 48B PX-5PD/P2D/TD: PX-5655
- 48C PX-5GD: PX-5655-G



BARE PX-5 REAR HOUSING ASSEMBLY WITH SIX NEGATIVE DIODES ALREADY INSTALLED

32A PX-5653

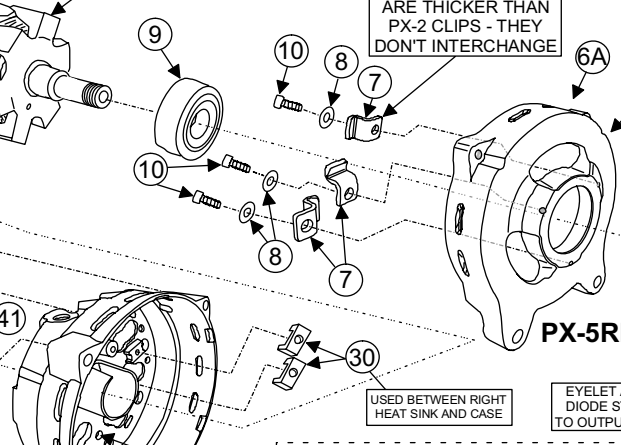
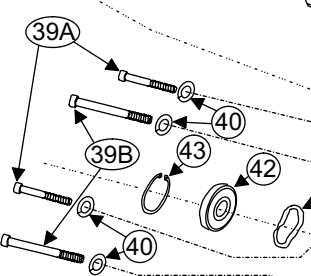
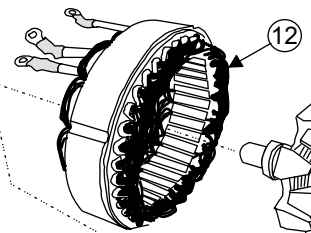
DESIGN CHANGE:
THE NEWEST PX-5 REAR HOUSING ASSEMBLY HAS TWO POSITIVE HEAT SINKS WITH THE NEGATIVE DIODES IN THE REAR HOUSING. THIS ASSEMBLY CAN BE USED ON EARLIER PX-5 ALTERNATORS IF THE GROUND CABLE PREVIOUSLY CONNECTED TO THE ALTERNATOR IS RELOCATED TO A BRACKET OR MOUNT BOLT.



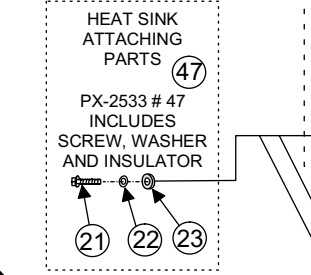
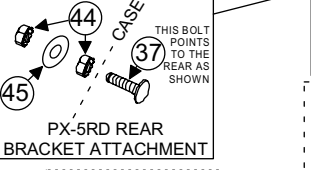
THE PX-1265 FAN HAS A SMALLER O.D. THAN THE PX-1057 FAN

PX-5 RETAINER CLIPS ARE THICKER THAN PX-2 CLIPS - THEY DON'T INTERCHANGE

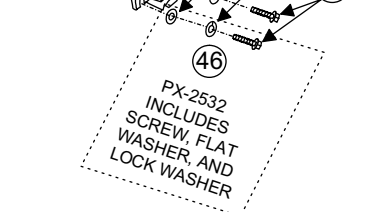
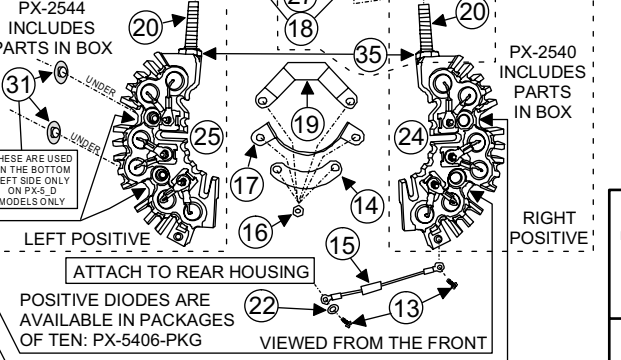
PX-5RD: A PX-1130 (K8) PULLEY WAS USED FROM '97-'01. A PX-1129 (K6) PULLEY WAS USED FROM 2001-UP. NOTE: SOME SPECIAL APPLICATIONS MAY STILL USE A PX-1130 (K8) PULLEY AFTER 2001.



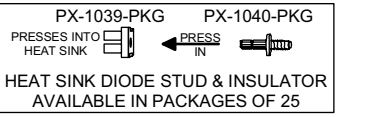
53 NEGATIVE DIODE ASSEMBLIES ARE PRESSED INTO THE REAR HOUSING FROM THE REAR AND ARE AVAILABLE IN PACKAGES OF 10 (PX-5335-PKG). A PX-5 REAR HOUSING (PX-1292) IS AVAILABLE WITH 6 NEGATIVE DIODES ALREADY INSTALLED AS PART NUMBER PX-5653.



- 36 5/16" LOCK NUT
- 26 FLAT WASHER
- 38 STRAP
- 35 5/16" JAM NUT
- 34 WASHER WITH TEETH
- 26 FLAT WASHER
- 33 BLACK INSULATOR
- 27 RED INSULATOR
- 27 FLAT WASHER
- 37 THIS BOLT POINTS DOWN AS SHOWN
- 34 CASE
- 45 CASE
- 54 CASE



NOTE: LATE PX-5GD, PD, RD, TD-200 AMP ALTERNATORS HAVE BEEN SUPERSEDED BY THE PX-5GD, PD, RD, TD-230 AMP ALTERNATOR.



Penntex INDUSTRIES, INC. Date: 04-02-2013
DRAWING BY Dmc REVISED BY DATE: Scale: None

PX-5 DUAL POSITIVE POST ALTERNATORS

PX-5-200, 230 & 250 Dual Positive Post (12-VOLT)**PARTS LIST**

Serial #'s 100555949 to Present



Note: Quantity (Qty.) is the number of single parts required in one alternator

No.	Part #	Description	Qty.	No.	Part #	Description	Qty.
1	PX-1060-PKG	Nut, SB Rotor (Package of 10)	1	32	PX-1292	Housing, Rear, Bare (PX-5, All)	1
2	PX-1059-PKG	Washer, Rotor Lock (Pkg of 10)	1	32A	PX-5653	Hsg, Rear (PX-5,All), With Neg. Diodes	1
3A	PX-1128	Pulley, 2.3 K6 SB (PX-5GD)	1	***	PX -5654	Housing, Rear,w/ neg. diodes, brush assembly, capacitor installed (PX-5TD)	1
3B	PX-1129	Pulley, 2.3 K6 SB (PX-5RD*, PD, P2D)	1	***	PX-5656	Housing, Rear,w/ neg. diodes, brush assembly, capacitor installed (PX-5RD)	1
3C	PX-1130	Pulley, 2.3 K8 SB (PX-5R*,TD)	1	33	PX-1070-PKG	Insulator, Bat Post (Black) (Pkg of 10)	2
4A	PX-1057	Fan, Cooling (PX-5 All Exc 5GD)	1	34	PX-1515	Washer, 5/16" External Tooth Lock	3
4B	PX-1265	Fan, Cooling (PX-5GD)	1	35	PX-1516	Nut, 5/16x18 Jam	4
4C	PX-4522	Fan Baffle, (PX-5GD)	1	36	PX-1106-PKG	Nut, 5/16x18 Steel Lock (Pkg of 10)	2
5A	PX-1058-PKG	Spacer, Fan (PX-5PD, P2D, PX-5TD-6-230 & 250) (Pkg of 10)	1	37	PX-1295	Bolt, 1/4-20x1" Carriage, (PX-5RD)	2
5B	PX-1273-PKG	Spacer, Fan(PX-5 except PD,TD-6)(Pkg of 5)	1	38	PX-3555	Strap, Output Post, (All PX-5_D)	1
6A	PX-1411	Housing, Front, Bare (PX-5RD)	1	39A	PX-1294-PKG	Bolt, Thru (PX-2, PX-4G, PX-5) (Pkg of 5)	2
6B	PX-1122	Housing, Front, Bare (PX-5TD)	1	39B	PX-1361-PKG	Bolt, Thru (PX-5) (Pkg of 5)	2
6C	PX-1348	Housing, Front, Bare (PX-5GD)	1	40	PX-1104-PKG	Washer, 1/4" Lock (Pkg of 15)	4
6D	PX-1051	Housing, Front, Bare (PX-5PD)	1	41	PX-1249-PKG	Spring, Wave, Rear Brg. (PX-5) (Pkg 10)	1
6E	PX-1123	Housing, Front, Bare (PX-5P2D)	1	42	PX-1291	Bearing, Rear (PX-5)	1
7	PX-1289-PKG	Retainer, Bearing Z Clip (Pkg 10)	3	43	PX-1366-PKG	Retainer, Bearing C-Ring (Pkg of 10)	1
8	PX-1100-PKG	Washer, #10 Lock (Pkg of 25)	5	44	PX-1196	Nut, 1/4"-20 Keps	2
9	PX-1074	Bearing, Front	1	45	PX-1103-PKG	Washer, #14 Flat (Pkg of 10)	3
10	PX-1305-PKG	Screw, 10-24x1/2" SHC (Pkg 10)	3	46	PX-2532	Screw Assembly, Brush	2
11	PX-1300	Rotor, 14V (PX5)	1	47	PX-2533	Screw Asm, Pos. Heat Sink	4
12A	PX-1299-1	Stator, 14V 230 Amp (PX-5)**	1	48A	PX-5650	Housing Assembly, Rear W/O Stator and Bearing (PX-5RD)	1
12C	PX-1299-5	Stator, 14V 250 Amp (PX-5)	1	48B	PX-5655	Housing Assembly, Rear W/O Stator & Brg. (PX-5TD, PD, P2D)	1
13	PX-1096-PKG	Screw, 8-32x3/8" Hex (Pkg of 25)	2	48C	PX-5655-G	Housing Assembly, Rear W/O Stator & Brg. (PX-5GD)	1
14	PX-1352	Strap, Small Rectifier	1	49	PX-2542	Post Assembly, Positive	2
15	PX-4511	Capacitor Assembly	1	50	PX-1117	Bolt, 3/8x1-1/4" Grade 5	1
16	PX-1099-PKG	Nut, 8-32 Keps (Pkg of 25)	6	51	PX-1244-PKG	Washer, 3/8" Flat (Pkg of 5)	1
17	PX-1351	Strap, Medium Rectifier	1	52	PX-1115	Washer, 3/8" Lock	1
18	PX-1392	Washer, 5/16" Flat (Thin)	2	53	PX-5335-PKG	Diode Asm, Negative (Pkg of 10)	6
19	PX-1350	Strap, Large Rectifier	1	54	PA-3607	Nut, 1/4" Flange (PX-5RD)	2
20	PX-2545-PKG	Bat Post, 5/16" Square Head (Pkg 5)	2	55	PX-8336	Bolt, 1/4-20x3/4" (PX-5TD)	1
21	PX-1097-PKG	Screw, 8-32x1/2" Hex (Pkg of 25)	6	56	PX-8423	Washer, DE Frame Screw Lock	1
22	PX-1108	Washer, M4 Flat	5	**	Late PX-5-200 alternators have been superseded by PX-5-230 amp alternators with no other change.		
23	PX-1049-PKG	Insulator, 8/32 Black Shoulder (Pkg 25)	4	***	Not in diagram		
24	PX-2540	Heat Sink Asm, Positive Right	1		e-mail: sales@penntexusa.com		
25	PX-2544	Heat Sink Asm, Positive Left	1				
26	PX-1116-PKG	Washer, 5/16" Flat (Pkg of 15)	6				
27	PX-1071-PKG	Insulator, Red Fiber Washer (Pkg of 10)	2				
28	PX-1098-PKG	Washer, #8 Flat (Pkg of 25)	2				
29	PX-2506	Brush Assembly (PX-5)	1				
30	PX-1072-PKG	Insulator, White Heat Sink (Pkg of 10)	2				
31	PX-1091-PKG	Insulator, Shoulder (Pkg of 5)	2				

PennTex 03-20-2013