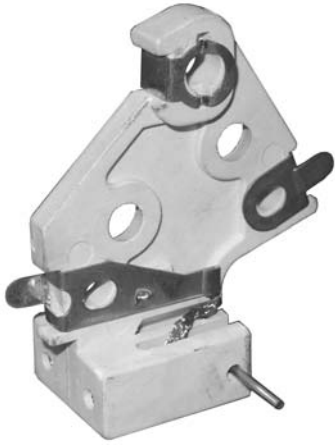


**BRUSH ASSEMBLIES**



**PX-1175**  
Brush Holder Assembly  
(PX9 Only)

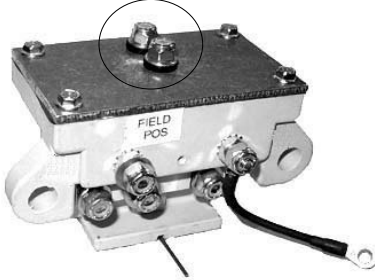


**PX-1192**  
Brush Holder Assembly  
(PX4JM/P/P2/PM/V-210,  
PX4P/P2-120)



**PX-2506**  
Brush Holder Assembly  
(PX2, PX4G, PX5, PX7)

NOTE: Make no connections at the two fasteners on the top plate.



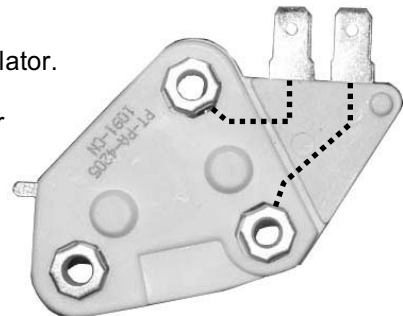
**PX-3517**  
Brush Holder Assembly  
(All PX3 & PX6) (Current design shown.  
On 01-07-05, the Field Wire Connection and  
Brush Ground Wire Connection were switched  
side-for-side. Use later locations as  
shown above when used in earlier models.)



**PX-4283**  
Brush Holder Assembly  
(PX4V-220-2, 4, 8, 10)

**INFORMATION NOTE:**

This is not an internal Voltage Regulator.  
This dummy regulator is used as a  
connection point for the Field/ Stator  
Wire Connector and for passage  
of current only. Do not substitute  
an actual voltage regulator in place  
of this part. Serious damage will  
be done to the charging system.



**PA-4205**  
Regulator, Dummy  
(PX4JM/P/P2/PM, PX9)